

Huon She Shed Inc.  
19 Charlotte Street  
Ranelagh Tas 7109  
info@huonsheshed.org.au



## Shed News, September 2022

### Planning & Fit-Out Update



#### Meeting Local Government Minister, Nic Street

We have also met with Local Government Minister Nic Street to ascertain what support the State Government may be able to provide us that would align with the support provided to the Men's Shed movement. Once again, this was a positive meeting and we are looking forward to developing further inroads at this level for women's sheds in Tasmania, especially our own Huon She Shed.

There is no doubt that the development of the Huon She Shed has been a long-winded process, particularly having to deal with myriad Council planning permit requirements and multiple hindrances.

However, there is light!

We recently had a very positive and upbeat meeting with the General Manager, Jason Browne, and highlighted our deepening frustrations with what seemed like never-ending roadblocks. He was incredibly supportive of the project and committed to helping it come to fruition. Within a week we had a call from the delightful Kathryn

Tucker, Senior Planner, at Council who was so encouraging and helpful by not only her fantastic customer service approach, but also outlining exactly what we needed to do and assisting us with examples of how to complete each step.

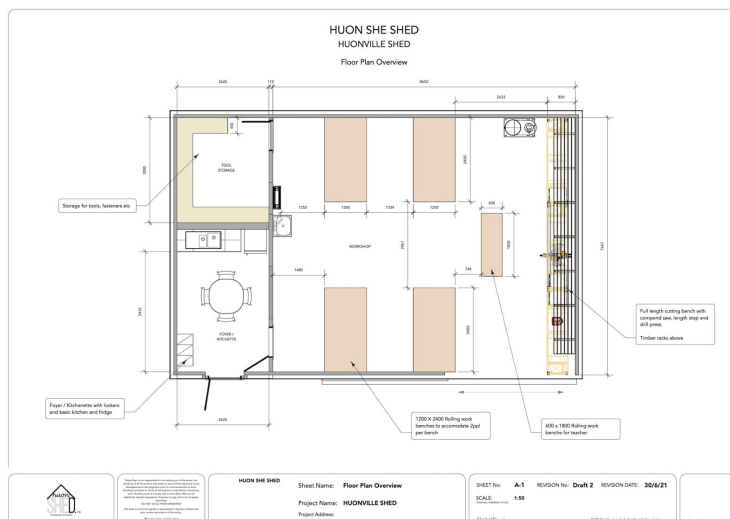
We are now about to submit the final plans, and with such supportive people on our side, we are hopeful we will be able to move forward soon with our fit-out. As you may be aware, Neville Smith Forest Products is our major sponsor and will be providing the fit-out. We are very grateful for their patience and of course your patience with

what has been such a long process. We want to thank



*Interior Design Plan*

Jason Browne and Kathryn Tucker at the Huon Valley Council for their incredible support. Also, a big thank you goes to Matty Ryan, Technical Designer / Environment Visualiser, for his support in putting together the site drawing plans.



*Contact:*

*Mon Lulan, President*

*Mobile: 0407 917 151*

*Email: [mon@huonsheshed.org.au](mailto:mon@huonsheshed.org.au)*

[huonsheshed.org.au](http://huonsheshed.org.au)



## Thank you for your support

The Huon She Shed is clearly a project we women want to see happen. We now have 613 women who have expressed interest in this project via our [Facebook page](#). We are now so close and want to acknowledge the support we have had along the way. From our major sponsor, Neville Smith Forest Products, sponsor, Bulk Nutrients, to those lending valuable advice such as PDA Surveyors, Huon Valley Council and Matty Ryan Technical Design, we are most grateful. Most of all though, to our members, you are the ones that keep us going and give us the reason to forge ahead, despite the multitude of setbacks! We as a Board remain committed to bringing you a safe, inclusive environment in which to learn basic building, metal working and wood working skills, to build confidence and independence, as well as valuable friendships.

## Interested in joining our Board?



As we move closer to our project truly getting underway, we need more support at Board level. We are calling for anyone interested in joining our Board either as a general Board member or taking on a specific Board role. We are aware that we have had the absolute minimal number of Board members required for a quorum who have taken on various duties, often doubling

up roles during this planning phase. However, we are aware that we need to increase our numbers to ensure we can always have a quorum. This is such a worthy project, and the role of a Board member is not onerous by any means. We meet once a month and enjoy considerable camaraderie. If you have an interest, we would love to

hear from you and share the role options available that would suit your interests, skills and available time.

The only stipulation is that you do need to be a paid-up member of the Huon She Shed to join the Board (\$45 annual membership fee). To learn more, just give Mon Lulan a call on: 0407 917 151, or send her an email at: [mon@huonsheshed.org.au](mailto:mon@huonsheshed.org.au)

*We'd love to hear from you!*

## The Women's Shed Movement

Women's sheds are popping up all over Australia. There is even a National Women's Shed Week in March to coincide with International Women's Day. Women's Sheds do face many challenges and as we don't have a National Women's Shed Association yet, we do not qualify for the many benefits that the Men's Sheds have, particularly on grants. But we are getting there! As far as we can ascertain, there is only one other "She Shed" in Tasmania located at Ross. If you would like to know more about the national movement, go to: [Australian Women's Shed Community's Facebook page](#).

